

Please visit www.neo-metro.com
for most current specifications.

PAT BASIN MODEL 9121 & 9141

30" WIDE SOLID SURFACE
DECK WITH INTEGRATED
BASIN



TABLE OF CONTENTS

Prior to Installation	2
Accessibility Comparison	3
Dimensional Data	4
Rough-Ins	5 - 6
Installation	7 - 10
Cleaning and Maintenance	11
Components & Repair Parts	12 - 13
Warranty Information	14

REQUIRED ITEMS FOR INSTALLATION - NOT SUPPLIED

- ✂ Chalk Line
- ✂ Hammer
- ✂ Carpenters Level
- ✂ 1/2" NPS Supply Angle Stops
- ✂ 7/16" Hex Wrench
- ✂ Plumbers Putty
- ✂ Teflon Tape
- ✂ 3/8" (12 Count) Fixture Wall Anchors and Anchoring Hardware (and Appropriate Tools)
- ✂ #10 (10 Count) Fixture Wall Anchors and Anchoring Hardware (and Appropriate Tools)

NEO-METRO

A Member of Morris Group International Morris Group
15125 Proctor Avenue • City of Industry, CA 91746 USA
800.591.9050 • 626.855.4854 • Fax 606.937.4725



Important: Some options may slightly alter installation. To ensure proper installation review the manual thoroughly and verify rough-ins before beginning any work. File this manual with the owner or maintenance personnel upon completion of installation.

Industry standard wall backing, for wall hung fixtures, is required. Installer provided wall anchors and wall anchoring hardware must be appropriate for wall construction, and have a minimum pull-out rating of 1000 lbs. (453.6 kg).

ANSI, UFAS or ADA compliance is subject to the interpretation and requirements of the local code authority and is the responsibility of the installer for verification.

Single Temp Valve Assembly: Recommended working water pressure is 30 psi (2.07 bars) minimum to 100 psi (6.89 bars) maximum. Maximum temperature is 130°F (54.4°C). Maximum outlet temperature is recommended is 105°F (40.6°C). Valve assembly must be drained prior to being subjected to freezing temperatures. A checkstop is provided with this valve assembly.

T/P Mixing Valve Assembly: Recommended working water pressure is 30 psi (2.07 bars) minimum to 100 psi (6.89 bars) maximum. Maximum hot water temperature is 180°F (82°C). Temperature adjustment range is 95-110°F (43-48°C). Valve assembly must be drained prior to being subjected to freezing temperatures. The valve assembly has a check integral to the inlet however, angle stop is to be provided by the installer.

Prior to installation, supply lines must be flushed of all foreign material such as pipe dope, chips, or solder. Debris or foreign material in water supply may damage valve.

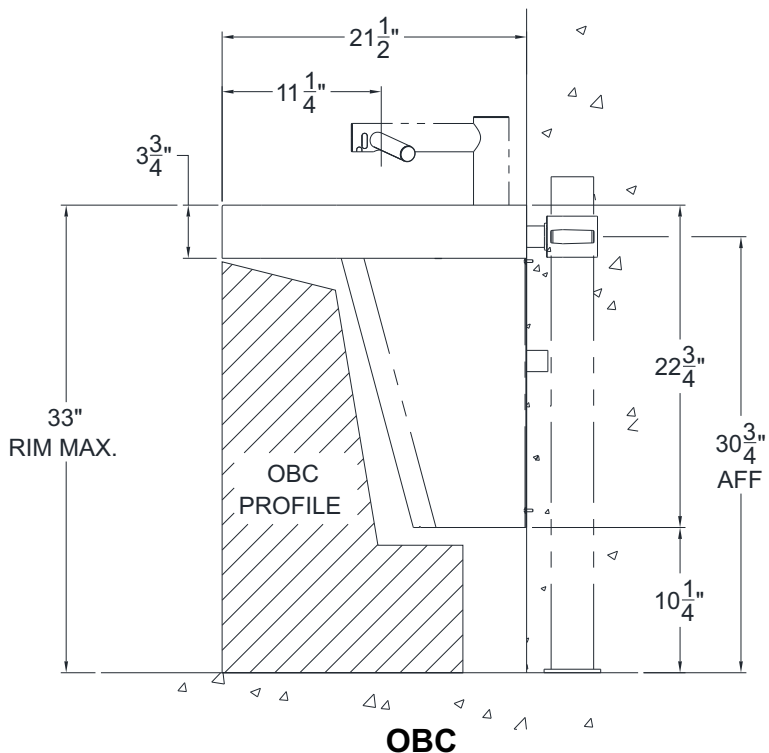
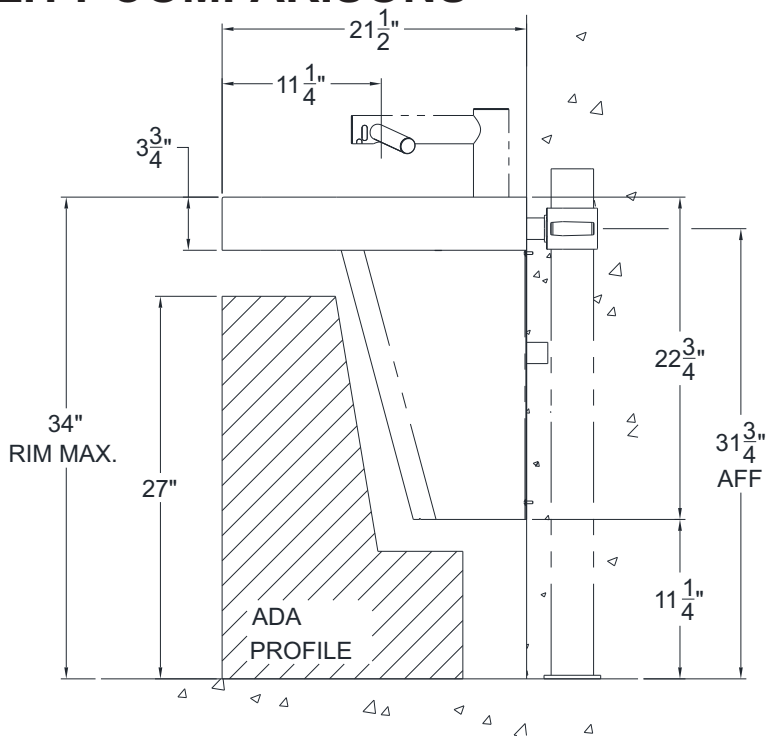
Teflon tape is recommended on all threaded waste and supply connections to reduce the possibility of leaks.

Provide: 110-120 VAC/60Hz/15A dedicated circuit when Dyson Airblade Faucet selected. Refer to Dyson installation instructions for more information.

NOTE: Receptacle(s) must be wired to a GFCI protected circuit. Fixture must be earth grounded per N.E.C. (National Electrical Code).

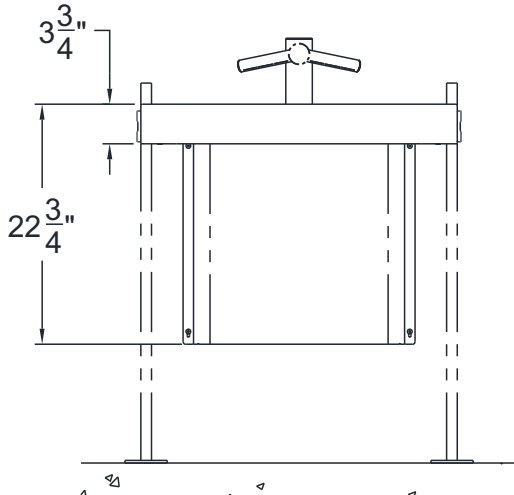
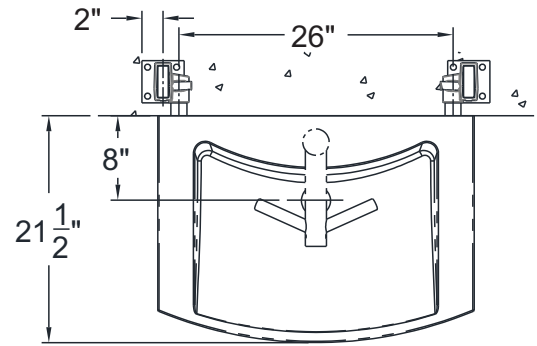
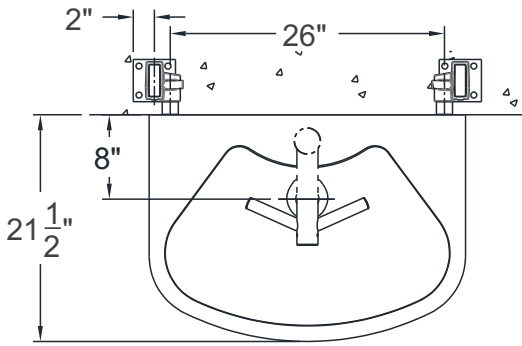
PAT BASIN 9121 & 9141

ACCESSIBILITY COMPARISONS

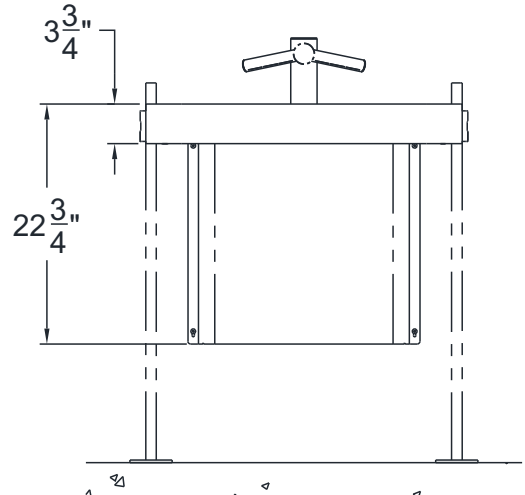


PAT BASIN 9121 & 9141

DIMENSIONAL DATA



**MODEL
#9121**

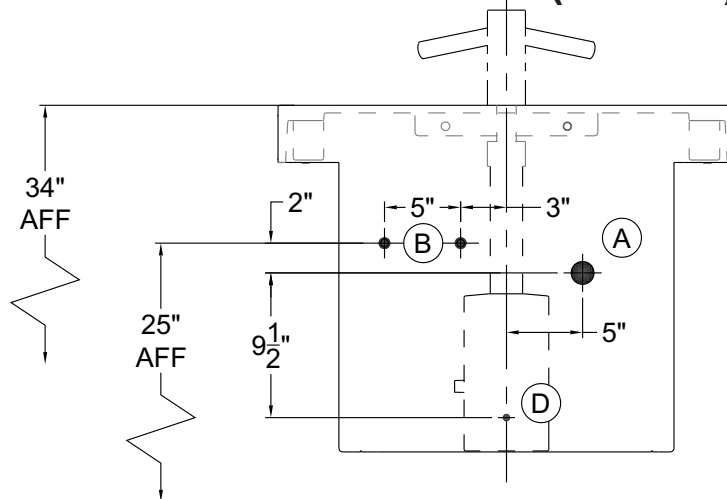


**MODEL
#9141**

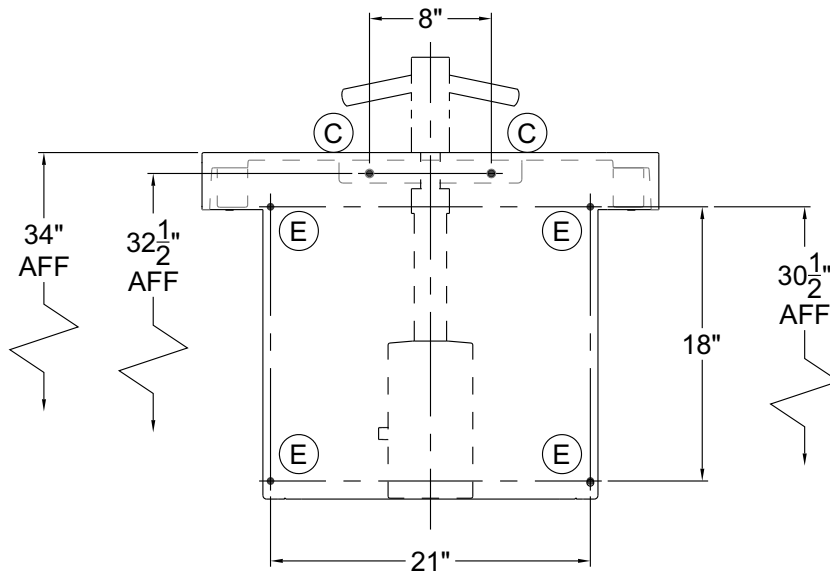
ROUGH-IN DIMENSIONS -ADA (ADULT)



PLUMBING



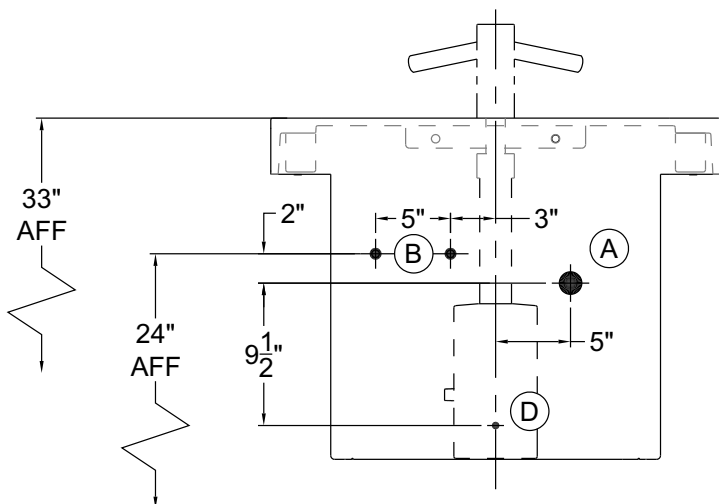
MOUNTING



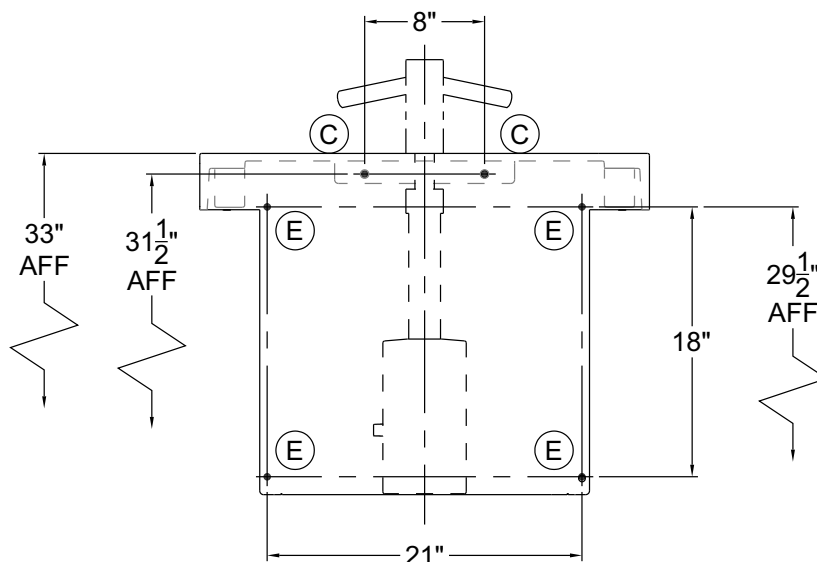
- (A) Waste Outlet for 1-1/2" O.D. P-Trap Provided.
- (B) Supply Stub-Outs with Stops for Valve 1/2" NPT Hot & Cold Supply Inlets.
- (C) Wall Anchoring for 9/16" Diameter, Mounting Bracket Holes, 2 Places.
- (D) 120VAC, 60 Hz, 3A (Max.) Electric Hard-wire.
- (E) Optional Wall Anchoring for .219" Diameter x 5/8" Long, Enclosure Mounting Slots, 4 Places.

ROUGH-IN DIMENSIONS -OBC

PLUMBING

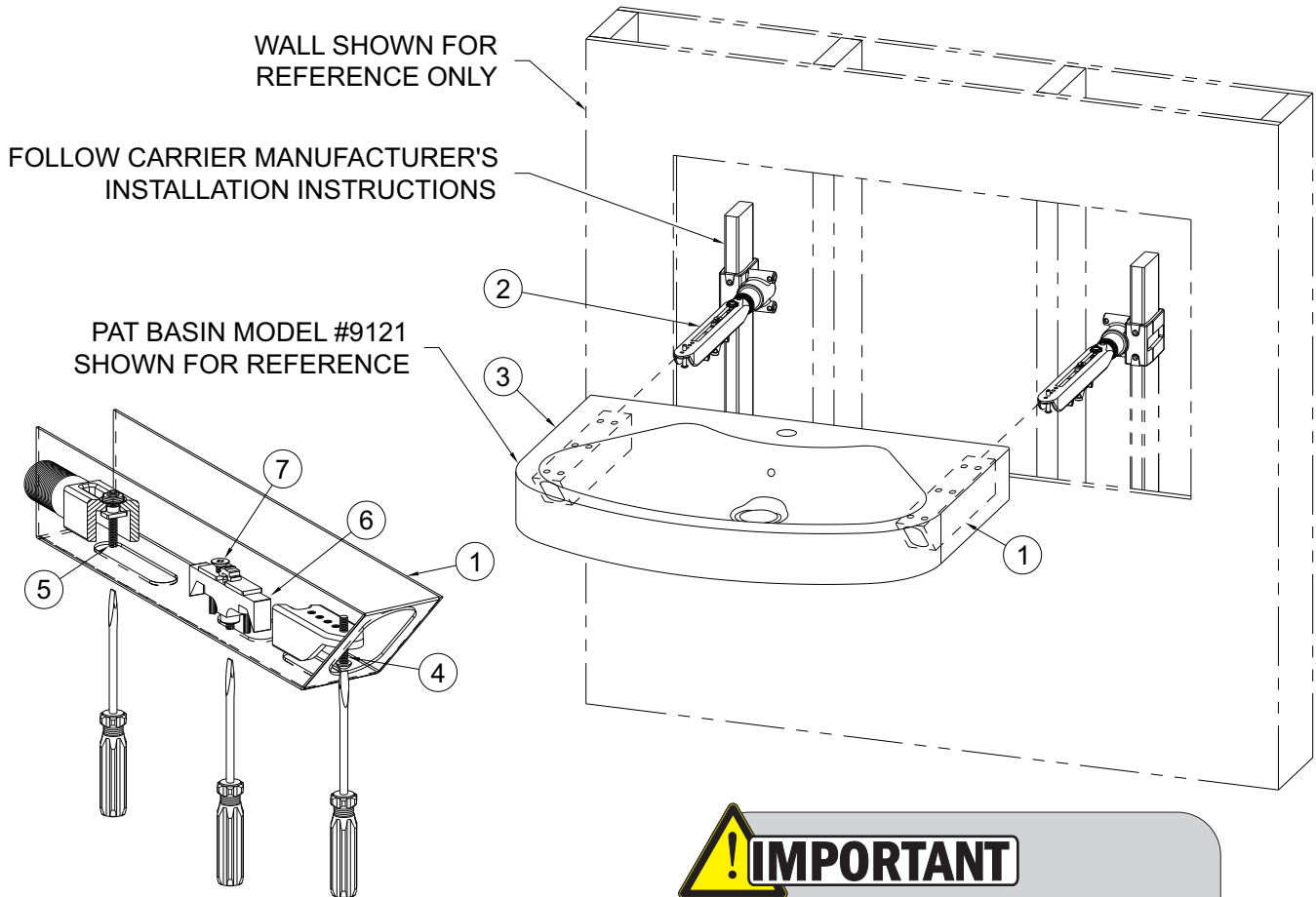



MOUNTING




- (A) Waste Outlet for 1-1/2" O.D. P-Trap Provided.
- (B) Supply Stub-Outs with Stops for Valve 1/2" NPT Hot & Cold Supply Inlets.
- (C) Wall Anchoring for 9/16" Diameter, Mounting Bracket Holes, 2 Places.
- (D) 120VAC, 60 Hz, 3A (Max.) Electric Hard-wire.
- (E) Optional Wall Anchoring for .219" Diameter x 5/8" Long, Enclosure Mounting Slots, 4 Places.


FIXTURE ANCHORING




 FYI: Fixtures are shipped with wall mounting brackets pre-installed onto the fixture.

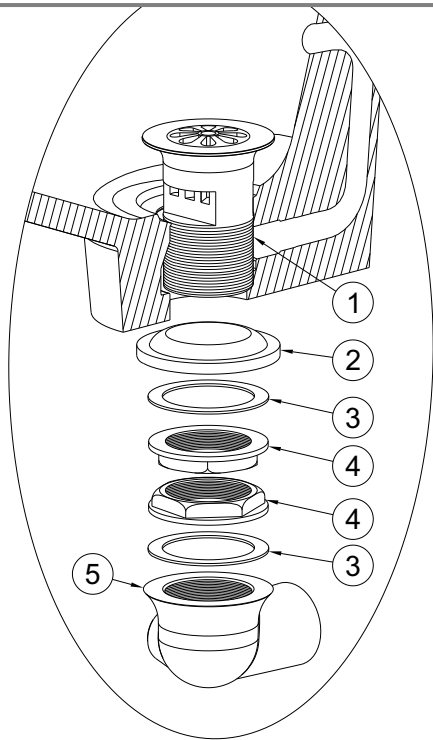
 **IMPORTANT**
Straight or requirement portions of fixture ① refers to the stations that are intended to meet ADA Guidelines.

- A. Slide lavatory carrier sleeves ① into carrier arms ② with back of lavatory ③ flush to wall.
- B. Level lavatory ③ using front ④ and back ⑤ leveling screws.
- C. To set position of locking device ⑥, turn set screw ⑦ clockwise.
- C. Lock lavatory into place by turning locking device ⑥ adjustment stud clockwise.

 NOTE: It may be advantageous to install to the deck, faucets, soap dispensers or other accessories prior to wall mounting.

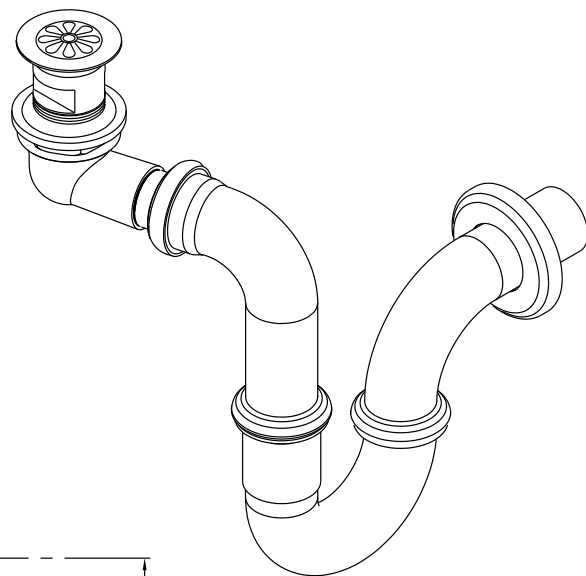
PAT BASIN 9121 & 9141

 **HINT:** Teflon tape is recommended on all threaded waste and supply connections.

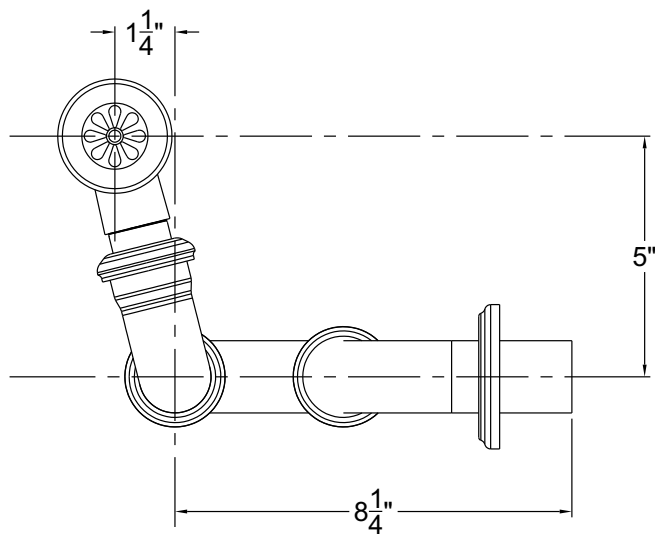


A. Install grid strainer and close elbow to bowl using plumber's putty.

- ① Grid Strainer w/ 1-1/2" -16 UNE Threads
- ② Rubber Gasket
- ③ Flat Fiber Washer
- ④ 1-1/2" -16 UNI Rough Chrome Brass Jam Nut
- ⑤ 1-1/2"-16 x 1-1/4" UNI Close Elbow with 3/8" NPT Clean-Out Plug



B. Assemble waste piping using teflon tape on all threaded connections and make up waste connections to 1-1/2" P-Trap.



PAT BASIN 9121 & 9141

OPTIONAL -MXTP VALVE INSTALLATION & ADJUSTMENT

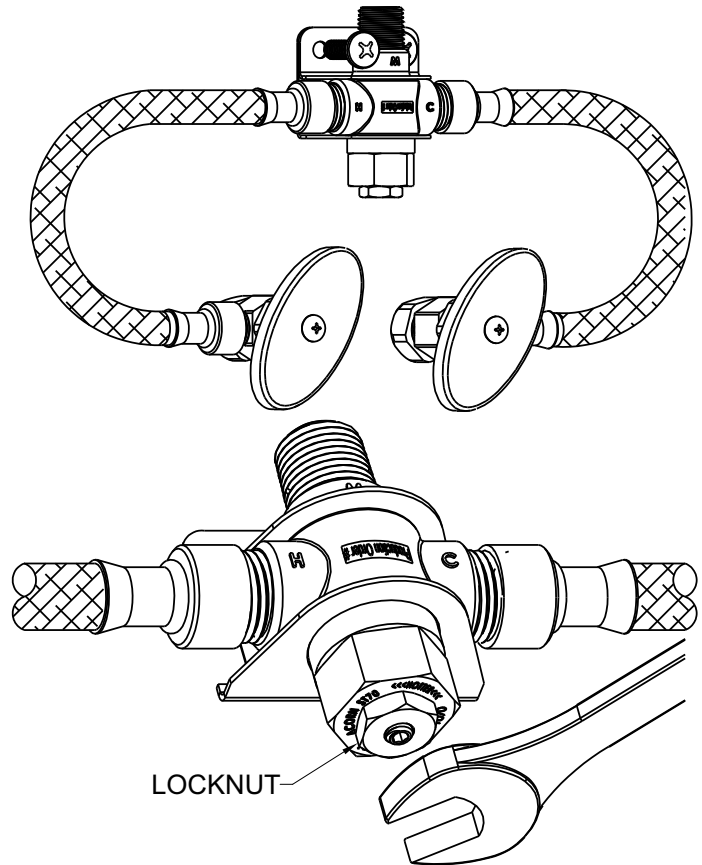
Valve Assembly Installation:


NOTE: Installation should be in accordance with accepted plumbing practices.

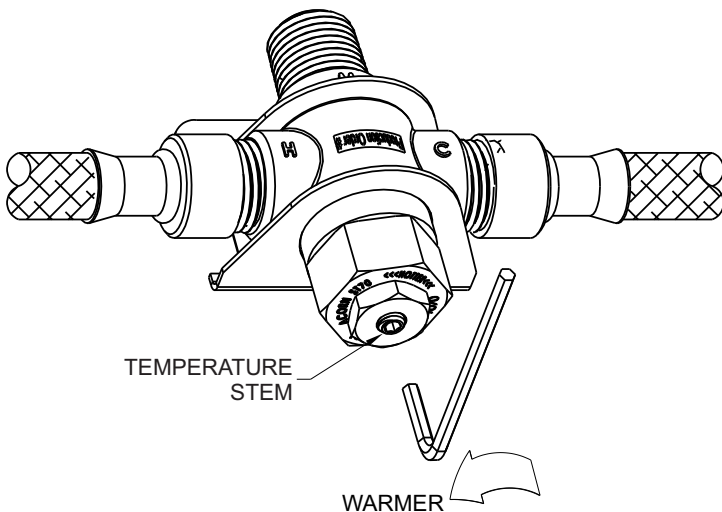
- 1) Locate suitable place for mounting the valve assembly. Valve assembly should be accessible for service and adjustment and as close to the point-of-use as possible. Wall anchors and anchoring hardware are by others.
- 2) Connect hot and cold water to supply valve using 1/2" NPT connections.
- 3) Connect outlet of tempering valve to spout using 1/2" NPT connections provided.
- 4) Turn on hot and cold water supplies. If any leaks are observed, hand tighten connections as necessary to stop leaks before proceeding.
- 5) Turn on fixture and allow water to flow for 2 minutes. Measure water temperature at outlet. If water is not at desired temperature, adjust as necessary.



Flush supply lines of all foreign material such as pipe dope, pipe chips, solder, sand etc. before making up supply connections.



 **HINT:** Angle stops are recommended and is the responsibility of the installer.




Temperature Adjustment:

- 1) Loosen locknut.
- 2) Turn on fixture and run water for at least 2 minutes. Allow supply temperature to stabilize.
- 3) Turn temperature stem counter-clockwise for hotter or clockwise for colder outlet temperature.
- 4) Tighten locknut to prevent accidental or unauthorized temperature adjustment.
- 5) Re-check outlet temperature.

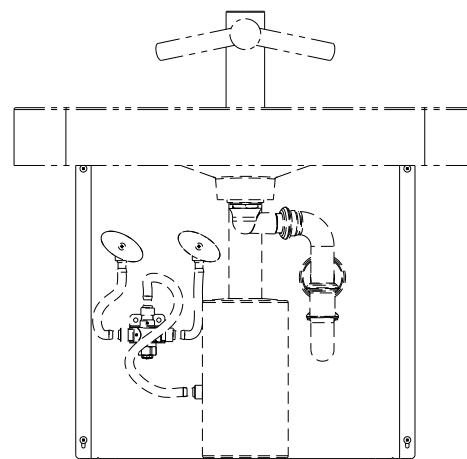
PAT BASIN 9121 & 9141

TRAP ENCLOSURE INSTALLATION

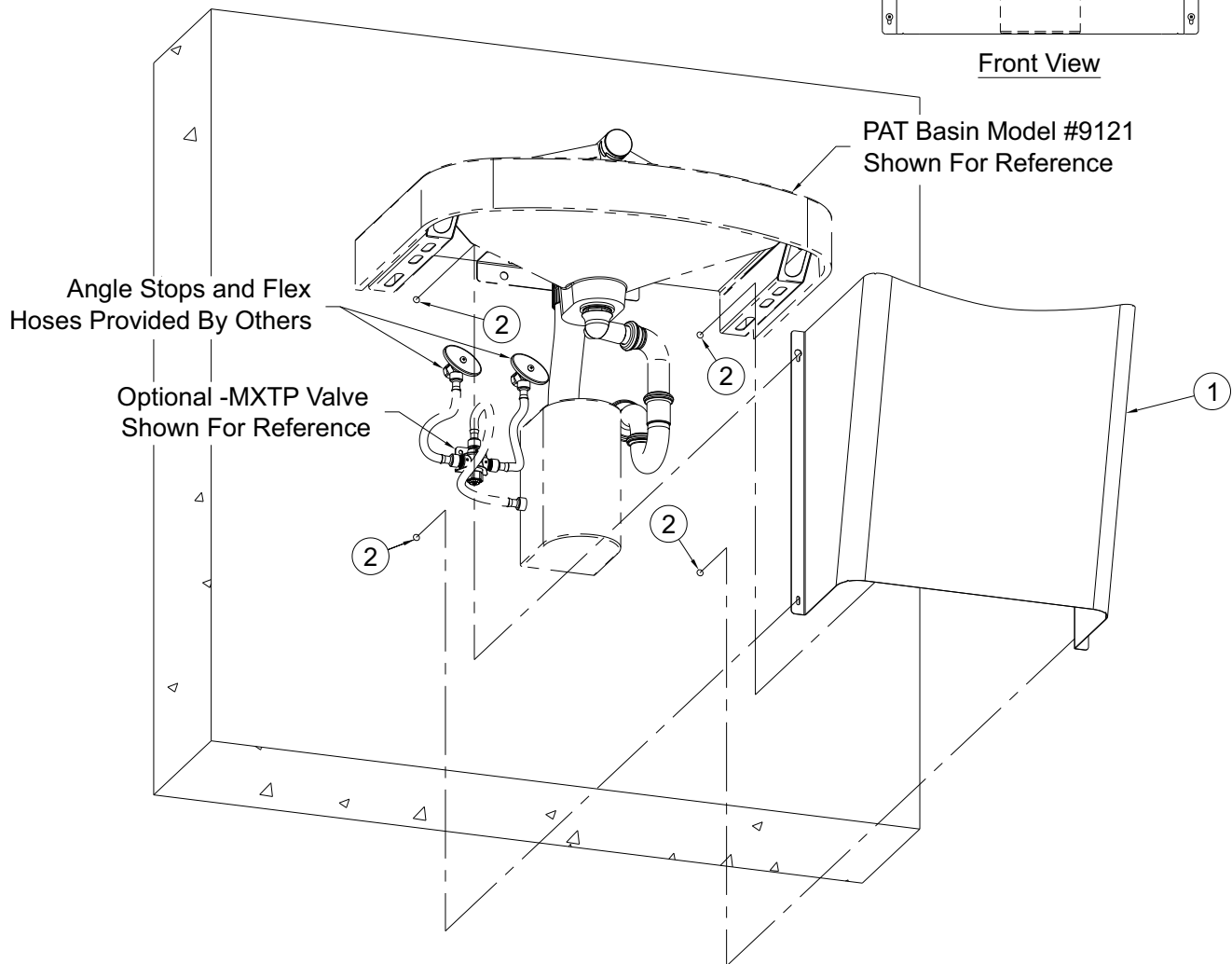
All wall anchors and anchoring hardware provided by others.

 **HINT:** It may be advantageous to install deck trim such as faucets, soap dispensers or other accessories prior to wall mounting.

Position station enclosures **①** aligning mounting points **②** and secure with installer provided hardware.



Front View



PAT BASIN 9121 & 9141

CARE, CLEANING AND REPAIR**SOLID SURFACE**

Acorn's densified solid surface material is composed of recycled solid-surface polymer resin, aluminum trihydrate and fillers. It is resistant to stains, impact and burns and complies with ANSI Z124.3. It is attractive, durable and easy to maintain.

ROUTINE CLEANING

Corterra should be kept clean at all times. If maintained, Corterra surfaces will retain their new, clean appearance indefinitely. Wash with a non-abrasive all purpose cleaner and water, then rinse. Wipe dry. (Never use cleaners with strong chemicals such as toilet bowl cleaners, rust removers, ceramic cook top cleaners, laquer thinners or oven cleaners). To remove persistent stains use a Scotch Brite pad and an abrasive cleaner or a solution of household bleach and water (1 part water to 1 part bleach).

REPAIRING SURFACE DAMAGE

Surface damage, such as minor chips, scratches, burn marks and graffiti can be repaired with a fine grit abrasive cleanser, such as a Scotch-Brite pad or fine grit sandpaper. For more serious physical damage caused by vandals, an Acorn Solid Surface Repair Kit is available. Contact the factory for details. Refer to drawing #9927-160-002.

CARE AND CLEANING OF STAINLESS STEEL SURFACE**NORMAL CLEANING**

Clean weekly or more often, as needed (especially high polishing surfaces)

RECOMMENDED CLEANING MATERIALS

- Sponge – natural or artificial
- Nylon or other soft-bristle material brush
- Soft cloth (as used on automobile finishes)

RECOMMENDED CLEANING SOLUTIONS

- Hand dishwashing liquid/soft water solution
- Mild soap/soft water solution
- 3M Stainless Steel Cleaner/Polish
- White vinegar/soft water solution (for brightening, removing oil and hard water deposits)
- CLR Brand Cleanser or baking soda/soft water solution (for brightening, removing hard water deposits)
- Club soda and sponge

FOR HIGH POLISH STAINLESS STEEL

Note: High polish stainless steel surfaces should never come into contact with any abrasive cleaning brush, cloth or cleaning agent.

To remove smudges and fingerprints:

Wipe surfaces with a quality Stainless Steel Cleaner/Polish. Apply using a soft non-abrasive cloth, wipe surfaces with stainless steel cleaner/polish.

To remove rust stains:

Wipe surfaces with CRES (available from Acorn) or equivalent cleaner. Use recommended solutions. Apply using a soft non-abrasive sponge. Rinse surfaces immediately after application. Always follow cleaner product directions provided. Afterwards, using a soft, non-abrasive cloth, wipe surfaces with stainless steel cleaner/polish.

FOR TOUGH PROBLEMS

- CRES Cleaner specifically for rust stains (available from Acorn)
- Tarn-X for general stains
- #7 chrome polish
- Silver polish

To remove stubborn spots or to treat a scratch (Standard Satin Finish Only):

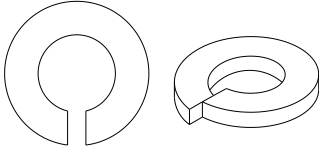
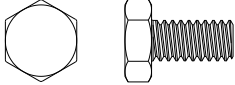
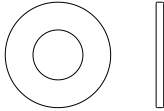
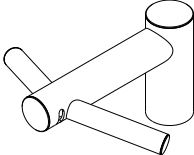
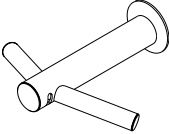
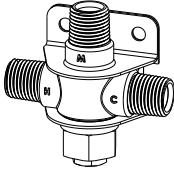
Use of synthetic, abrasive, general-purpose pads such as Scotch Brite is recommended. Apply the Stainless Steel Cleaner/Polish to the synthetic, abrasive pads and CAREFULLY rub out spot with cleaner/ polish. Be sure to rub in the direction of the grain! Do not allow steel wool to come in contact with the stainless steel. Steel particles can embed into the stainless steel surface and create rust!

Stainless steel should be kept clean at all times. If maintained, stainless steel surfaces will retain their new, clean, polished appearance indefinitely. To remove water spots or rust spots, stainless steel cleaner/polish on a cloth is recommended.

IF SPOTS ARE STUBBORN OR IF YOU WISH TO TREAT A SCRATCH: synthetic, abrasive, general-purpose pads such as Scotch Brite are recommended. Apply the stainless steel cleaner/polish to the synthetic, abrasive pad and CAREFULLY rub out spot with cleaner/polish. **Be sure to rub in the direction of the grain!** Do not allow steel wool to come in contact with stainless steel. Steel particles can embed into the stainless steel surface and create rust.


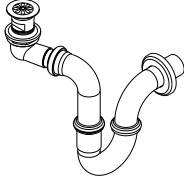
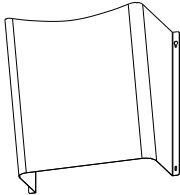
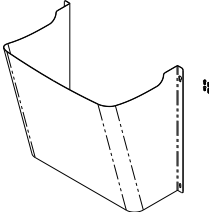
PAT BASIN 9121 & 9141

COMPONENTS & REPAIR PARTS

Description	Part No.	Diagram
MOUNTING HARDWARE		
1/4" Stainless Steel Helical Lock Washer	0337-050-000	
Stainless Steel, Hex Head, Cap Screw, 1/4"-20 x 1/2" Long	0206-004-000	
1/4"-20 x 1" Thick Fender Washer	0332-004-000	
SPOUTS		
Dyson Airblade™ Wash+Dry Short (Deck Mounted Faucet)	3040-091-000	
Dyson Airblade™ Wash+Dry Wall (Wall Mounted Faucet)	3040-093-000	
VALVE		
ST70-12 1/2" NPT Mixing Valve	7802-101-001	
ST70-12 Valve Bracket Assembly	7842-020-001	

PAT BASIN 9121 & 9141

COMPONENTS & REPAIR PARTS

Description	Part No.	Diagram
WASTE ASSEMBLY		
Grid Strainer w/ Close Elbow	4926-062-001	
P-Trap Waste Assembly	4970-040-003	
ENCLOSURES		
Trap Enclosure Assembly (9121)	3050-010-001	
Trap Enclosure Assembly (9141)	3050-210-001	



ACORN ENGINEERING COMPANY

Manufacturers of Engineered Plumbing Products

MAIL ADDRESS
P.O. BOX 3527
CITY OF INDUSTRY, CA 91744 U.S.A.

PHYSICAL ADDRESS
15125 PROCTOR AVENUE
CITY OF INDUSTRY, CA 91746 U.S.A.

TOLL FREE 800-488-8999 • **LOCAL** 626-336-4561
FAX 626-961-2200 • **WEB** www.acorneng.com

WARRANTY INFORMATION

Acorn warrants that all of its products are guaranteed against defective material or poor workmanship for a period of one year from date of shipment. Acorn's liability under this warranty shall be discharged by replacing without charge F.O.B. City of Industry, California, any goods, or part thereof, which appears to the company upon inspection to be of defective material or not of first class workmanship, provided that claim is made in writing to the company within reasonable period after receipt of the product. Where claims for defects are made, the defective part or parts shall be delivered to the company, prepaid, at City of Industry, California for inspection. Acorn will not be liable for the cost of repairs, alterations or replacement, or for any expense connected therewith made by the owner or his agents, except upon written authority from the Acorn City of Industry office. Acorn will not be liable for any damages caused by defective materials or poor workmanship, except for replacements, as above provided. Contact local Acorn Representative for complete terms and conditions.